



# PECUE LANE/I-10 INTERCHANGE

East Baton Rouge Parish

CITY/PARISH PROJECT NO. 09-CS-US-0041

STATE PROJECT NO. H.004104

FEDERAL AID PROJECT NO. IM-1709(507)



## Open House Public Meeting

Wednesday, February 25, 2015

4:30 pm to 7:30 pm

St. George Kleinpeter Activity Center

7808 St. George Drive

Baton Rouge, Louisiana

### PUBLIC MEETING FORMAT

This Public Meeting is being conducted as an Open House. Everyone is welcomed to attend any time during the hours of 4:30pm and 7:30pm. As you entered the building you should have been asked to sign in, so a record of your participation can be maintained. A short slide presentation on the project will be shown at intervals in the classroom area, and members of the project team will be available throughout tonight's meeting to provide assistance and to answer any questions you may have.

Throughout the Open House, the following informational stations will be available:

1. Sign-in and handout table
2. Slide Presentation
3. Exhibit and map display area where you may review the project area map and ask questions of project staff
4. Real Estate and Relocation table
5. Comment area for providing written and verbal comments

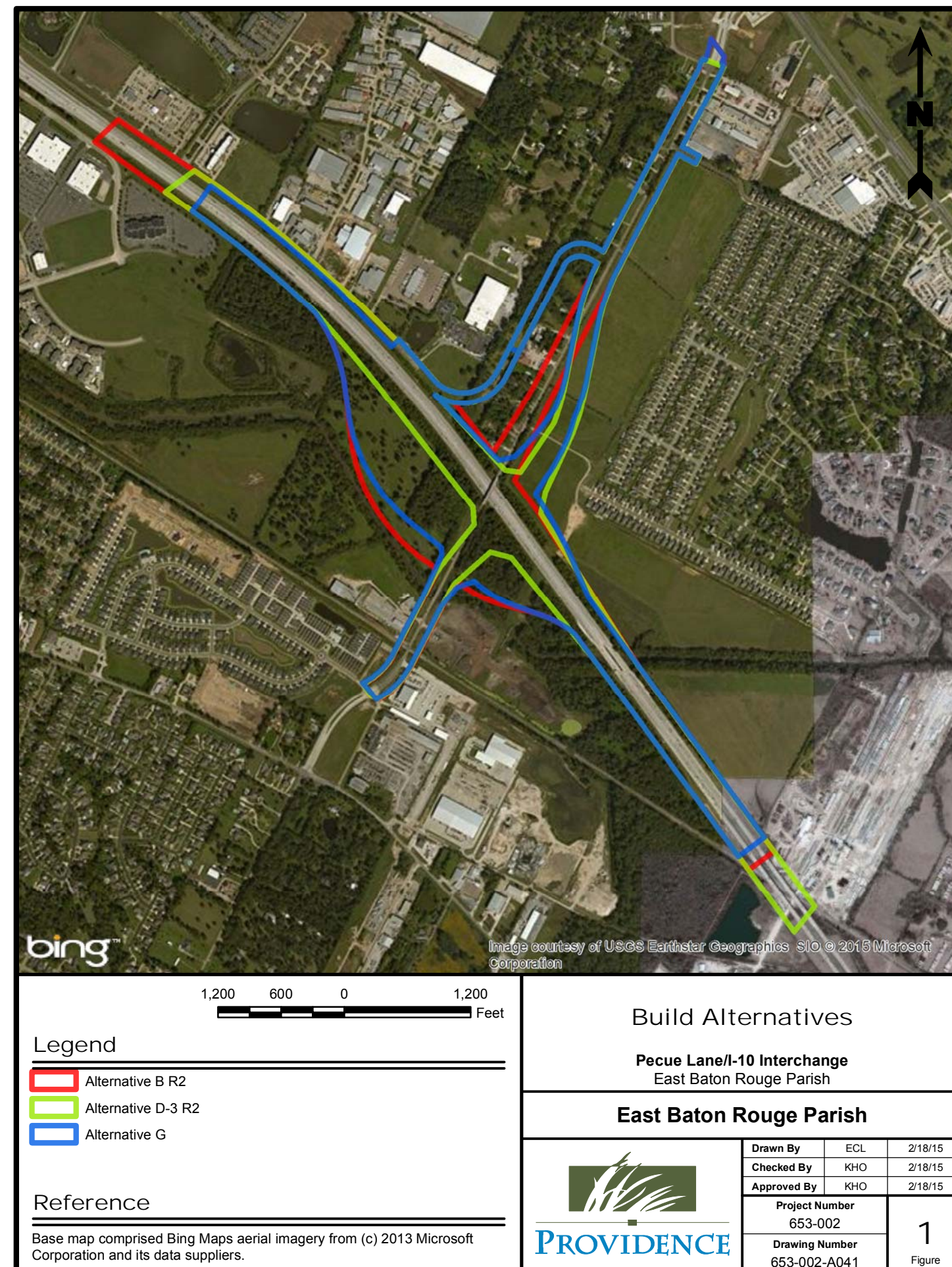
To get the most from your visit to the meeting, it is recommended that you visit all stations.

### PUBLIC COMMENTS/PARTICIPATION

Your views and participation are welcomed and are vital in ensuring that decisions on the proposed project reflect the needs of the people affected by the project. Comments may be submitted as follows:

1. In writing by using the comment form provided in this handout. Written comments may be handed in tonight at the comment table or mailed to the address given on the form.
2. Verbal comments may be recorded tonight at the comment table.
3. Comments may be emailed to [ponder@csrsonline.com](mailto:ponder@csrsonline.com).

\*Please include your name, address, email, phone, and the date on the comment form so you can be contacted if needed. Although comments are encouraged and valued throughout the process, they must be postmarked within 10 days of this meeting to be included in the formal meeting transcript.





# PECUE LANE/I-10 INTERCHANGE

## East Baton Rouge Parish

### INTRODUCTION

This meeting and handout provides information on the environmental studies that are being performed for the proposed Pecue Lane/I-10 Interchange Project.

The proposed Pecue Lane/I-10 Interchange project is one of the projects included in the 2005 Half-Cent Sales Tax Extension, known as the Green Light Plan (GLP). Since this project utilizes federal funding in conjunction with state and local funds a Stage 1 Planning and Environmental Study must be completed. Public involvement is a part of the Stage 1 study process.

Tonight is the third public meeting held to present information on the Pecue/I-10 Interchange project.

The purpose of this public meeting is to:

- Provide updated information about the proposed project
- Request input on the currently proposed build alternatives; eight alternatives were previously proposed, three alternatives remain under consideration
- Explain the process through which this project must proceed
- Explain the next steps

### In This Handout

Meeting Format.....	1
Public Comments/Participation.....	1
Introduction .....	2
Proposed Action .....	2
Stage 1 Information .....	3
Next Steps .....	3
Project Team .....	3
Alternatives History .....	4
Alternatives Map .....	5
EA Flowchart .....	6
Comment Form.....	7

### PRELIMINARY PURPOSE AND NEED

The Purpose and Need for this project is:

- To provide an additional interchange with I-10
- To mitigate traffic congestion on I-10 and the local roadway network
- To provide enhanced mobility for the commerce needs of the surrounding area

### PECUE LANE/I-10 INTERCHANGE PROPOSED ACTION

The proposed action would include:

- Construction of an interchange with multiple through and turn lanes on Pecue Lane
- Construction of entrance and exit ramps on east and westbound I-10 at Pecue Lane
- Replacement of the current two-lane overpass bridge
- Replacement of the Pecue Lane/Wards Creek Bridge
- An extension of Reiger Road to a new intersection with Pecue Lane

The project design limits are Pecue Lane from the Kansas City Railroad tracks through to the “elbow” of Pecue Lane just south of Airline Highway.

# PECUE LANE/I-10 INTERCHANGE

## East Baton Rouge Parish

### STAGE 1 INFORMATION

#### Planning and Environmental

The Department of Transportation and Development (DOTD) Project Delivery Process includes a total of 7 stages, from Stage 0 to Stage 6 (please see the presentation board located in the entry foyer). This project is in Stage 1, which is the Planning and Environmental stage. The purpose of Stage 1 is to continue the planning and environmental effort with more emphasis on environmental review and refinements to the planning developed in Stage 0. This stage uses the NEPA (National Environmental Policy Act) process and documents potential project impacts in an Environmental Assessment (EA).

During the EA process, each proposed road design alternative, including the No-Build alternative, is analyzed with regard to the following potential impacts:

- |                   |                            |
|-------------------|----------------------------|
| ▪ Social          | ▪ Recreational Areas       |
| ▪ Economic        | ▪ Wetlands                 |
| ▪ Cultural        | ▪ Water Resources          |
| ▪ Noise           | ▪ Floodplains              |
| ▪ Air             | ▪ Protected Species and/or |
| ▪ Prime Farmlands | Habitat                    |

Two public meetings were held previously, in 2010 and 2011, to present proposed build alternatives, interchange justification data, and other project information. Since that time, multiple traffic analyses were conducted on the original build alternatives, and additional build alternatives were considered and studied in detail. As a result of these analyses and studies, two of the original eight build alternatives (B R2 and D-3 R2) presented in February 2011 have been deemed acceptable to move forward to detailed analysis in the EA. A third previously not presented build alternative has also been deemed acceptable to move forward in the EA. This new build alternative is a Diverging Diamond Interchange (DDI) and is represented on the Alternatives Map as Alternative G. It is the addition of this new build alternative that is the primary purpose for holding tonight's Public Meeting.

The following two pages contain an Alternatives Screening Decision Tree that reflects the decision process that led to the three currently proposed build alternatives and an Alternatives Map that shows all three of the proposed build alternatives within the project study area.

### NEXT STEPS

1. Upon completion of this Public Meeting, the Project Team will complete its analysis of the alternatives, and with consideration of public input received this evening, select a Preferred Alternative.
2. A draft EA, along with technical studies, will be submitted to the City-Parish and DOTD for approval.
3. The draft EA will be released for public review and a Public Hearing will be scheduled.
4. The Public Hearing will represent the final opportunity for you to provide your comments on this essential project.
5. Upon the expiration of the Public Hearing comment period, comments will be addressed and the EA will be finalized, with a Finding of No Significant Impact (FONSI) if applicable.

### PROJECT TEAM MEMBERS

#### Lead Agencies



#### Project Sponsor



#### Lead Consultant

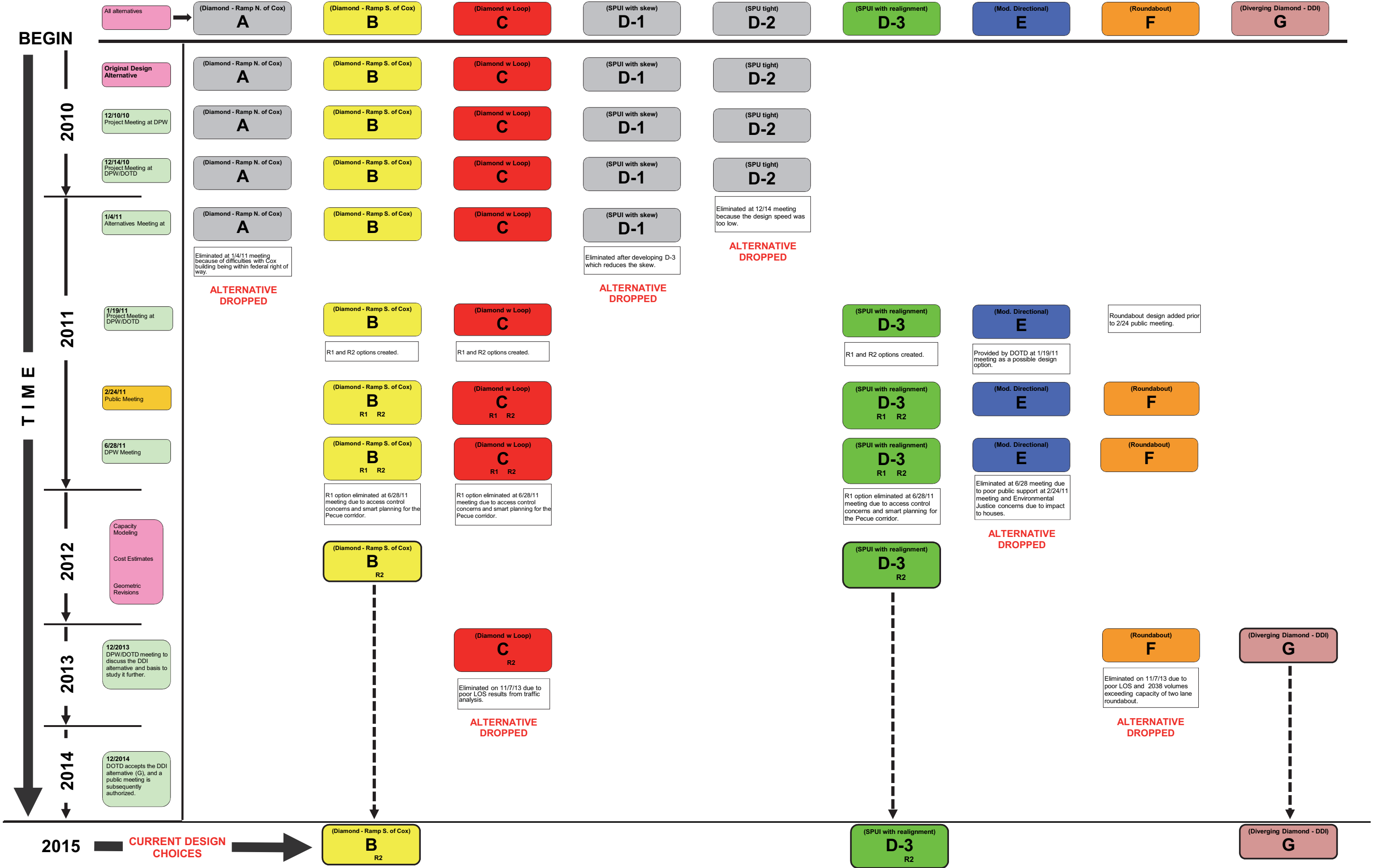


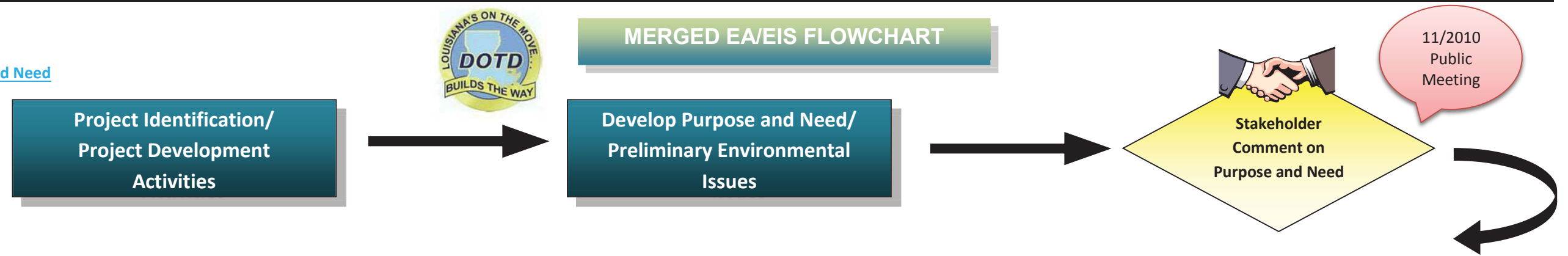
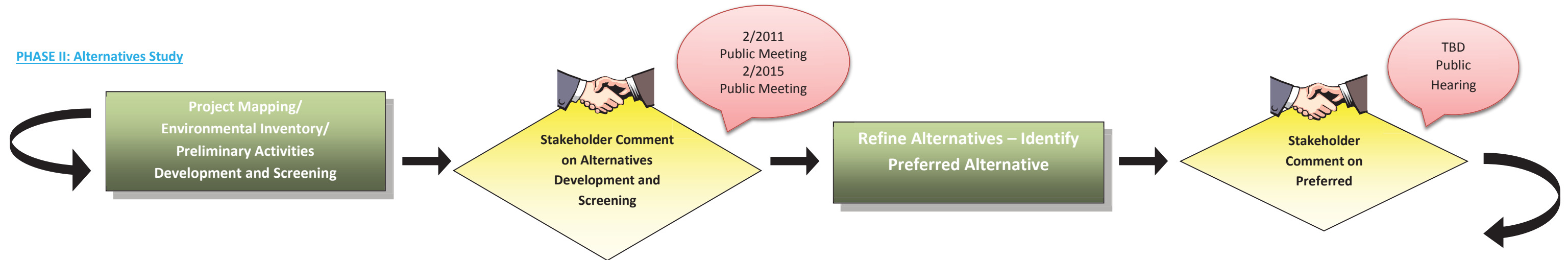
#### Subconsultants



Pecue Lane at I-10: Summary of the Development of Design Alternatives

Last Updated: 2/12/2015



PHASE I: Scoping/Purpose and NeedPHASE II: Alternatives StudyPHASE III: Documentation